

VANCOUVER PARK PLACE

NE THURSTON & NE PARKWAY DR., VANCOUVER, WA



69,309

CARS PER DAY

PROPERTY HIGHLIGHTS

- 1,400 and 4,733 SF
- Located off of SR 500 with freeway signage
- Strong national co-tenancy
- Across from Vancouver Mall
- Call for Rates

ANCHORED BY:



DEMOGRAPHICS

	1 MILE	3 MILES	5 MILES
2016 POPULATION	14,797	122,313	261,029
2016 AVG. HH INCOME	\$59,020	\$62,304	\$67,643
2016 DAYTIME POPULATION	11,972	52,709	112,984

CONTACT



BROCK SWITZER
503-245-1400 EXT 518 - BROCK@HSPACIFIC.COM

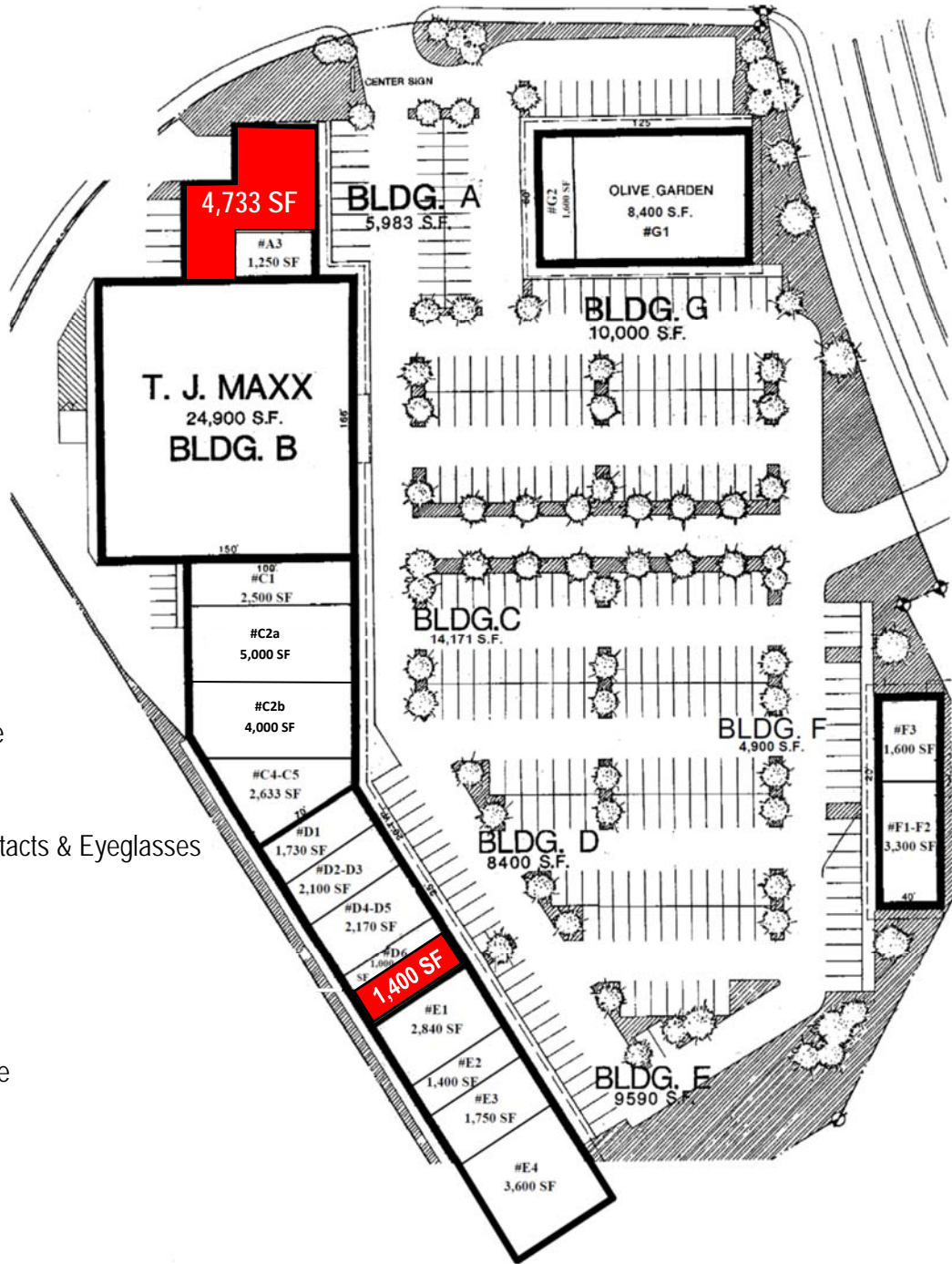
KARA PHELPS
503-245-1400 EXT 515 - KARA@HSPACIFIC.COM



HSM Pacific Realty, Inc.
0612 SW Idaho St, Suite 2
Portland, OR 97239
www.hsmpacific.com

VANCOUVER PARK PLACE

NE THURSTON & NE PARKWAY DR., VANCOUVER, WA



- A1** Vacant - 4,733 SF
- A3 Nail Pro
- B TJ Maxx
- C1 Fire House Subs
- C2a Plato's Closet
- C2b Mattress Superstore
- C5 Backyard Bird Shop
- D1 Dry Cleaners
- D2/D4 America's Best Contacts & Eyeglasses
- D6 Jamba Juice
- D6a** Vacant - 1,400 SF
- E1 Jenny Craig
- E2 Sushi
- E3 Supercuts
- E4 Great Taste Chinese
- F1/2 Aspen Dental
- F3 Starbucks
- G1 Olive Garden
- G2 Miracle Ear

CONTACT



BROCK SWITZER
503-245-1400 EXT 518 - BROCK@HSPACIFIC.COM

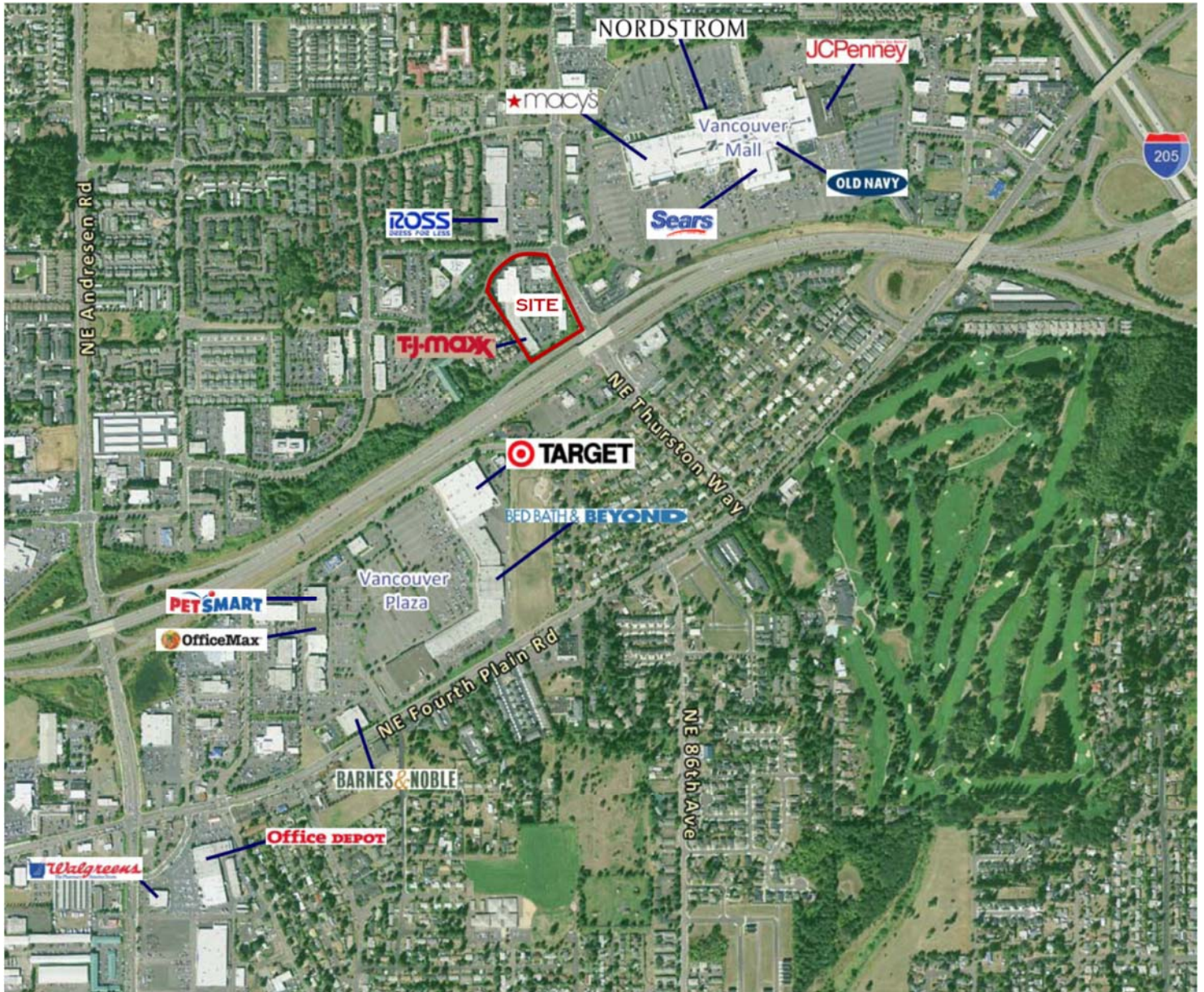
KARA PHELPS
503-245-1400 EXT 515 - KARA@HSPACIFIC.COM



HSM Pacific Realty, Inc.
0612 SW Idaho St, Suite 2
Portland, OR 97239
www.hspacific.com

VANCOUVER PARK PLACE

NE THURSTON & NE PARKWAY DR., VANCOUVER, WA



CONTACT



BROCK SWITZER
503-245-1400 EXT 518 - BROCK@HSPACIFIC.COM

KARA PHELPS
503-245-1400 EXT 515 - KARA@HSPACIFIC.COM



HSM Pacific Realty, Inc.
0612 SW Idaho St, Suite 2
Portland, OR 97239
www.hspacific.com

FULL PROFILE

2000-2010 Census, 2016 Estimates with 2021 Projections

Calculated using Weighted Block Centroid from Block Groups



Lat/Lon: 45.6559/-122.5888

RF1

Ne Thurston Way & Ne Parkway Dr

Vancouver, WA

		1 Mile	3 Miles	5 Miles
POPULATION	2016 Estimated Population	14,797	122,313	261,029
	2021 Projected Population	15,767	130,529	278,226
	2010 Census Population	13,326	113,055	243,941
	2000 Census Population	9,763	96,485	208,929
	Projected Annual Growth 2016 to 2021	1.3%	1.3%	1.3%
	Historical Annual Growth 2000 to 2016	3.2%	1.7%	1.6%
HOUSEHOLDS	2016 Estimated Households	6,705	48,152	102,284
	2021 Projected Households	7,196	51,816	109,951
	2010 Census Households	5,968	43,876	94,120
	2000 Census Households	3,981	36,721	79,350
	Projected Annual Growth 2016 to 2021	1.5%	1.5%	1.5%
	Historical Annual Growth 2000 to 2016	4.3%	1.9%	1.8%
AGE	2016 Est. Population Under 10 Years	12.7%	13.4%	12.9%
	2016 Est. Population 10 to 19 Years	11.0%	12.8%	13.2%
	2016 Est. Population 20 to 29 Years	17.5%	15.6%	14.6%
	2016 Est. Population 30 to 44 Years	18.0%	19.7%	20.2%
	2016 Est. Population 45 to 59 Years	15.1%	18.3%	19.0%
	2016 Est. Population 60 to 74 Years	14.0%	14.1%	14.4%
	2016 Est. Population 75 Years or Over	11.8%	6.1%	5.7%
	2016 Est. Median Age	37.0	35.5	36.3
MARITAL STATUS & GENDER	2016 Est. Male Population	46.2%	48.9%	49.3%
	2016 Est. Female Population	53.8%	51.1%	50.7%
	2016 Est. Never Married	30.4%	30.0%	29.7%
	2016 Est. Now Married	39.9%	44.6%	46.2%
	2016 Est. Separated or Divorced	20.6%	19.6%	19.0%
	2016 Est. Widowed	9.2%	5.8%	5.2%
INCOME	2016 Est. HH Income \$200,000 or More	2.9%	2.2%	3.2%
	2016 Est. HH Income \$150,000 to \$199,999	2.9%	3.0%	4.1%
	2016 Est. HH Income \$100,000 to \$149,999	9.7%	11.3%	13.0%
	2016 Est. HH Income \$75,000 to \$99,999	10.2%	13.6%	14.0%
	2016 Est. HH Income \$50,000 to \$74,999	21.2%	22.3%	20.6%
	2016 Est. HH Income \$35,000 to \$49,999	16.2%	15.7%	15.4%
	2016 Est. HH Income \$25,000 to \$34,999	12.9%	11.0%	9.9%
	2016 Est. HH Income \$15,000 to \$24,999	12.3%	11.1%	10.1%
	2016 Est. HH Income Under \$15,000	11.8%	9.8%	9.7%
	2016 Est. Average Household Income	\$59,020	\$62,304	\$67,643
	2016 Est. Median Household Income	\$47,854	\$53,350	\$57,270
	2016 Est. Per Capita Income	\$26,748	\$24,587	\$26,648
	2016 Est. Total Businesses	887	5,241	11,991
2016 Est. Total Employees	11,972	52,709	112,984	

This report was produced using data from private and government sources deemed to be reliable. The information herein is provided without representation or warranty.

FULL PROFILE

2000-2010 Census, 2016 Estimates with 2021 Projections

Calculated using Weighted Block Centroid from Block Groups



Lat/Lon: 45.6559/-122.5888

RF1

Ne Thurston Way & Ne Parkway Dr

Vancouver, WA

		1 Mile	3 Miles	5 Miles
RACE	2016 Est. White	78.7%	79.6%	80.5%
	2016 Est. Black	4.0%	3.3%	3.0%
	2016 Est. Asian or Pacific Islander	5.7%	5.6%	5.7%
	2016 Est. American Indian or Alaska Native	0.8%	0.9%	0.9%
	2016 Est. Other Races	10.6%	10.5%	9.9%
HISPANIC	2016 Est. Hispanic Population	1,608	14,979	29,296
	2016 Est. Hispanic Population	10.9%	12.2%	11.2%
	2021 Proj. Hispanic Population	11.9%	13.4%	12.3%
	2010 Hispanic Population	9.0%	10.7%	9.8%
EDUCATION (Adults 25 or Older)	2016 Est. Adult Population (25 Years or Over)	10,001	80,708	173,862
	2016 Est. Elementary (Grade Level 0 to 8)	2.6%	4.1%	3.7%
	2016 Est. Some High School (Grade Level 9 to 11)	7.3%	7.9%	7.1%
	2016 Est. High School Graduate	26.9%	28.8%	26.8%
	2016 Est. Some College	29.6%	28.4%	28.4%
	2016 Est. Associate Degree Only	10.6%	10.8%	10.7%
	2016 Est. Bachelor Degree Only	14.0%	13.9%	15.6%
	2016 Est. Graduate Degree	9.0%	6.2%	7.7%
HOUSING	2016 Est. Total Housing Units	6,859	49,565	105,175
	2016 Est. Owner-Occupied	37.3%	51.7%	54.9%
	2016 Est. Renter-Occupied	60.5%	45.4%	42.4%
	2016 Est. Vacant Housing	2.2%	2.9%	2.7%
HOMES BUILT BY YEAR	2010 Homes Built 2005 or later	16.8%	9.5%	8.2%
	2010 Homes Built 2000 to 2004	12.6%	9.1%	9.4%
	2010 Homes Built 1990 to 1999	23.1%	20.1%	21.2%
	2010 Homes Built 1980 to 1989	16.8%	12.8%	13.5%
	2010 Homes Built 1970 to 1979	14.0%	21.6%	21.1%
	2010 Homes Built 1960 to 1969	7.0%	11.0%	9.2%
	2010 Homes Built 1950 to 1959	3.7%	7.0%	6.5%
	2010 Homes Built Before 1949	6.0%	9.0%	10.9%
HOME VALUES	2010 Home Value \$1,000,000 or More	0.5%	0.8%	0.9%
	2010 Home Value \$500,000 to \$999,999	4.2%	4.2%	5.4%
	2010 Home Value \$400,000 to \$499,999	3.6%	4.4%	5.7%
	2010 Home Value \$300,000 to \$399,999	10.1%	11.9%	14.2%
	2010 Home Value \$200,000 to \$299,999	43.0%	41.7%	41.8%
	2010 Home Value \$150,000 to \$199,999	24.6%	22.1%	19.2%
	2010 Home Value \$100,000 to \$149,999	9.5%	7.5%	6.2%
	2010 Home Value \$50,000 to \$99,999	3.4%	3.0%	2.5%
	2010 Home Value \$25,000 to \$49,999	0.3%	1.0%	1.1%
	2010 Home Value Under \$25,000	0.9%	3.5%	3.0%
	2010 Median Home Value	\$218,923	\$226,348	\$242,386
	2010 Median Rent	\$896	\$779	\$773

This report was produced using data from private and government sources deemed to be reliable. The information herein is provided without representation or warranty.

FULL PROFILE

2000-2010 Census, 2016 Estimates with 2021 Projections

Calculated using Weighted Block Centroid from Block Groups



Lat/Lon: 45.6559/-122.5888

RF1

Ne Thurston Way & Ne Parkway Dr

Vancouver, WA

		1 Mile	3 Miles	5 Miles
LABOR FORCE	2016 Est. Labor Population Age 16 Years or Over	11,977	96,457	206,476
	2016 Est. Civilian Employed	54.6%	59.9%	60.3%
	2016 Est. Civilian Unemployed	4.6%	4.5%	4.2%
	2016 Est. in Armed Forces	-	0.1%	0.1%
	2016 Est. not in Labor Force	40.8%	35.5%	35.4%
	2016 Labor Force Males	45.0%	48.3%	48.8%
	2016 Labor Force Females	55.0%	51.7%	51.2%
OCCUPATION	2010 Occupation: Population Age 16 Years or Over	5,538	48,978	110,099
	2010 Mgmt, Business, & Financial Operations	10.4%	11.0%	12.6%
	2010 Professional, Related	18.7%	17.4%	19.3%
	2010 Service	19.2%	19.6%	17.9%
	2010 Sales, Office	29.4%	25.8%	25.8%
	2010 Farming, Fishing, Forestry	0.2%	0.3%	0.5%
	2010 Construction, Extraction, Maintenance	7.4%	9.4%	8.6%
	2010 Production, Transport, Material Moving	14.8%	16.6%	15.3%
	2010 White Collar Workers	58.4%	54.2%	57.8%
	2010 Blue Collar Workers	41.6%	45.8%	42.2%
TRANSPORTATION TO WORK	2010 Drive to Work Alone	78.4%	77.2%	77.7%
	2010 Drive to Work in Carpool	10.8%	11.4%	10.1%
	2010 Travel to Work by Public Transportation	2.1%	3.1%	3.3%
	2010 Drive to Work on Motorcycle	0.1%	0.2%	0.2%
	2010 Walk or Bicycle to Work	4.0%	2.5%	2.6%
	2010 Other Means	0.6%	0.9%	1.0%
	2010 Work at Home	4.0%	4.6%	5.1%
TRAVEL TIME	2010 Travel to Work in 14 Minutes or Less	32.1%	28.6%	28.7%
	2010 Travel to Work in 15 to 29 Minutes	44.7%	42.7%	41.9%
	2010 Travel to Work in 30 to 59 Minutes	18.8%	23.9%	24.4%
	2010 Travel to Work in 60 Minutes or More	4.4%	4.7%	5.0%
	2010 Average Travel Time to Work	18.1	19.9	20.1
CONSUMER EXPENDITURE	2016 Est. Total Household Expenditure	\$328 M	\$2.44 B	\$5.48 B
	2016 Est. Apparel	\$11.4 M	\$84.7 M	\$191 M
	2016 Est. Contributions, Gifts	\$20.8 M	\$154 M	\$358 M
	2016 Est. Education, Reading	\$11.9 M	\$87.8 M	\$204 M
	2016 Est. Entertainment	\$18.1 M	\$136 M	\$306 M
	2016 Est. Food, Beverages, Tobacco	\$51.3 M	\$380 M	\$847 M
	2016 Est. Furnishings, Equipment	\$10.9 M	\$82.1 M	\$186 M
	2016 Est. Health Care, Insurance	\$29.6 M	\$218 M	\$484 M
	2016 Est. Household Operations, Shelter, Utilities	\$102 M	\$754 M	\$1.70 B
	2016 Est. Miscellaneous Expenses	\$4.96 M	\$36.6 M	\$81.5 M
	2016 Est. Personal Care	\$4.27 M	\$31.7 M	\$71.3 M
	2016 Est. Transportation	\$62.6 M	\$471 M	\$1.05 B

This report was produced using data from private and government sources deemed to be reliable. The information herein is provided without representation or warranty.