

PRIME SQUARE 205

1010 SE 96TH AVE. · PORTLAND · OR



PROPERTY HIGHLIGHTS

- 1,269 SF available
- Traffic Counts
 - I-205 165,900 ADT
 - Washington 22,611 ADT
- Call for rates

AREA RETAILERS INCLUDE:



DEMOGRAPHICS

	1 MILE	3 MILES	5 MILES
2017 POPULATION	21,051	206,302	453,163
2017 AVG. HH INCOME	\$56,506	\$66,224	\$71,996
2017 DAYTIME POPULATION	13,485	61,470	185,830

CONTACT:

DOUG MAGNUSEN doug@hsmpacific.com 503.245.1400 x516



PRIME SQUARE 205

1010 SE 96TH AVE. · PORTLAND · OR



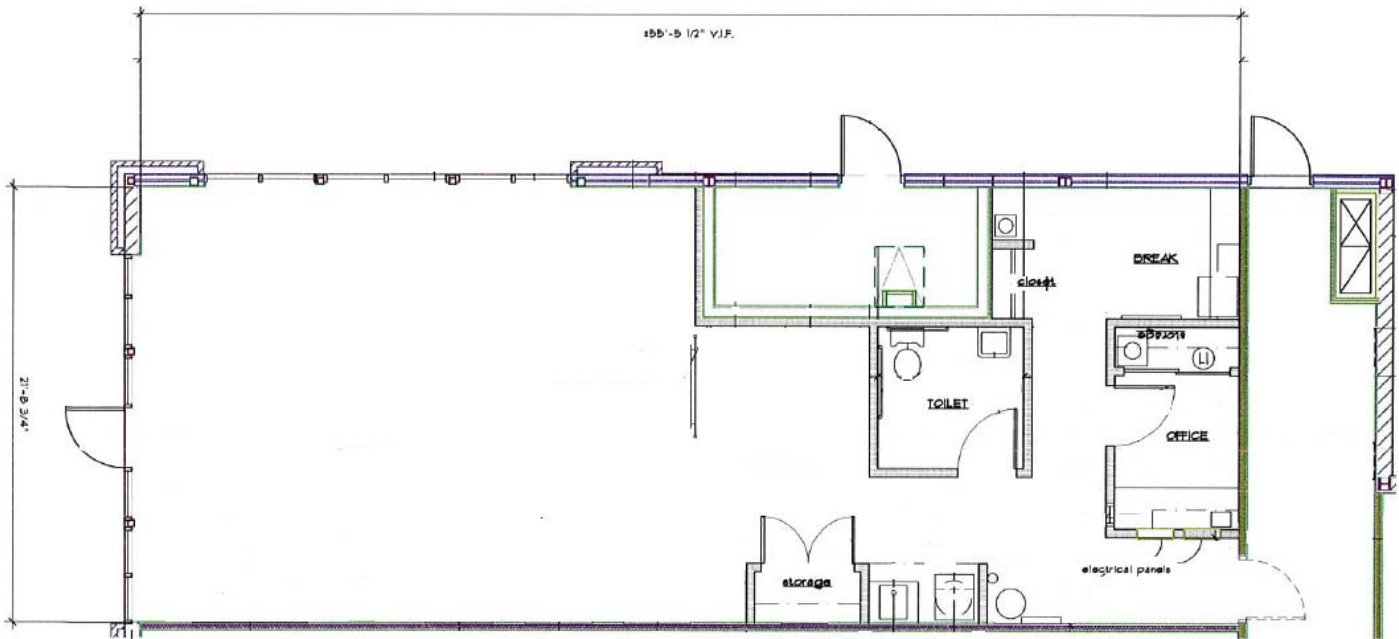
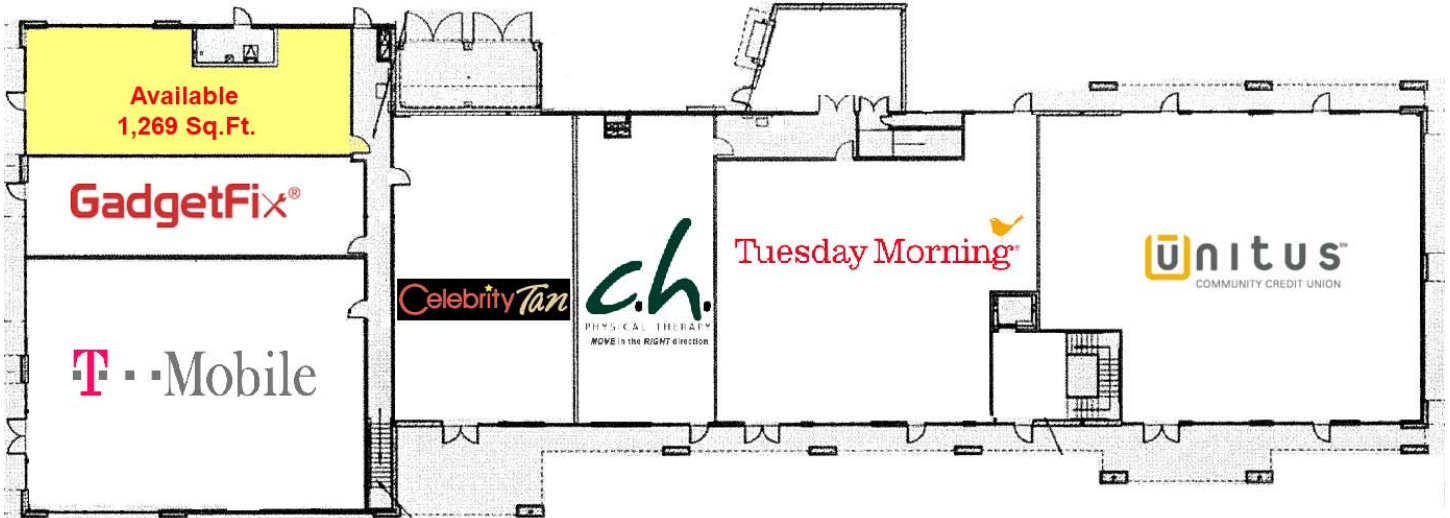
CONTACT: DOUG MAGNUSEN

doug@hsmacific.com 503.245.1400 x516



PRIME SQUARE 205

1010 SE 96TH AVE. · PORTLAND · OR



CONTACT:

DOUG MAGNUSEN doug@hsmpacific.com 503.245.1400 x516

