

FOR LEASE

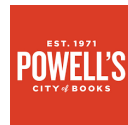
Pearl District Retail

PRIME RETAIL LOCATION AT 10TH & DAVIS - PORTLAND, OR



PROPERTY HIGHLIGHTS AND SURROUNDING RETAILERS

- 5,000 SF AVAILABLE ON THE CORNER OF NW 10TH & DAVIS
- LOCATED IN THE HEART OF THE PEARL DISTRICT, ADJACENT TO THE BREWERY BLOCKS; NEAR NATIONAL AND BOUTIQUE RETAILERS AND RESTAURANTS
- HIGH HOUSEHOLD INCOMES AND DENSE DAYTIME POPULATION IN THE IMMEDIATE AREA
- FORMER EVENT/CATERING SPACE



west elm



BROCK SWITZER

503-245-1400 x518

BROCK@HSMPCAFIC.COM

MELISSA MARTIN

503-245-1400 x525

MELISSA@HSMPCAFIC.COM

A MEMBER OF
CHAINLINKS
RETAIL ADVISORS



4260 GALEWOOD ST. SUITE B LAKE OSWEGO, OR 97035

BUILDING PHOTOS



NW DAVIS ST. - NOT A PART

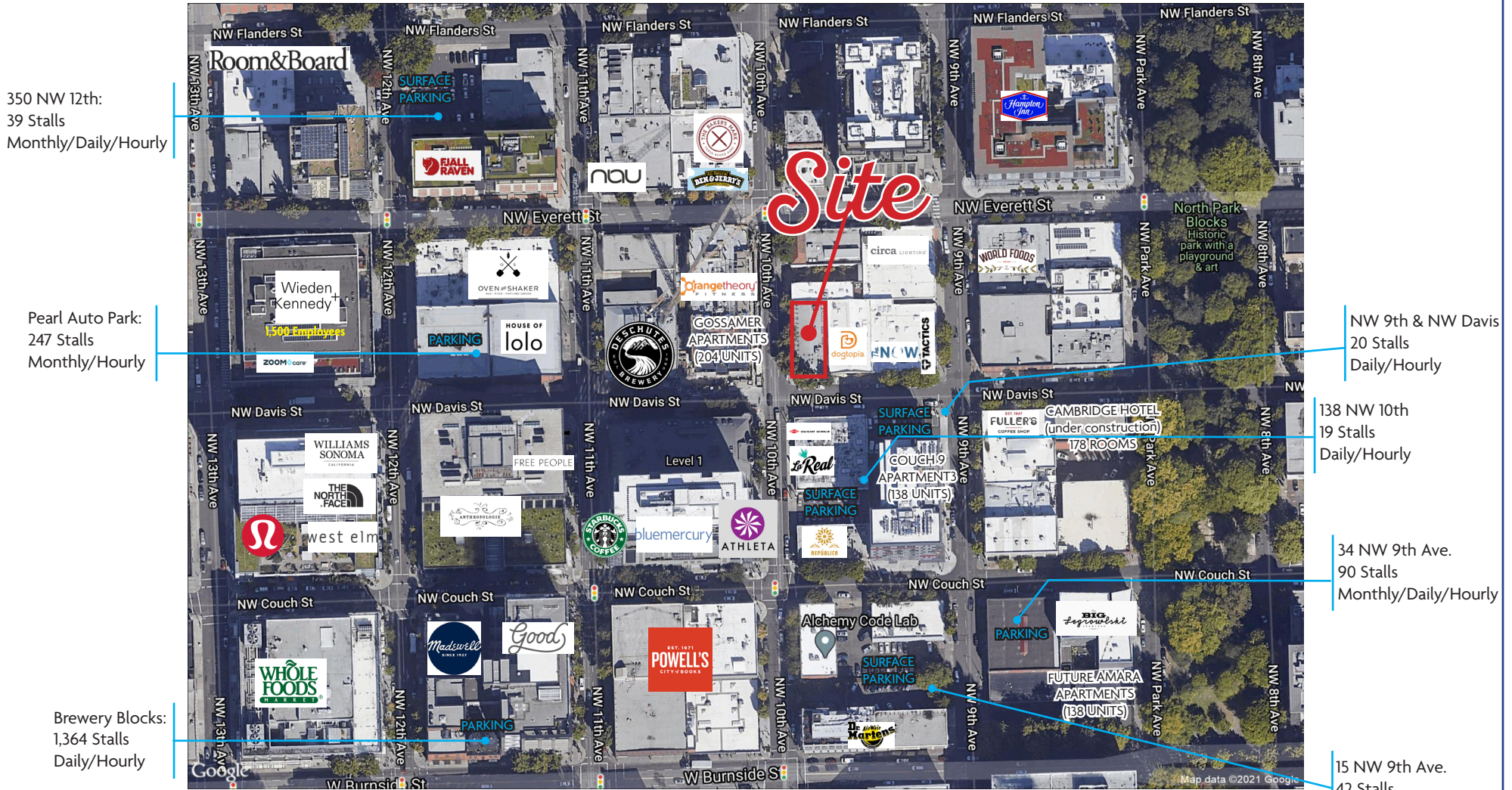


CORNER OF NW 10TH & DAVIS ST.



NW DAVIS ST.

AERIAL AND DEMOS + PARKING



Demographics



- 1 MILE – 47,455
- 3 MILE – 190,347
- 5 MILE – 426,291

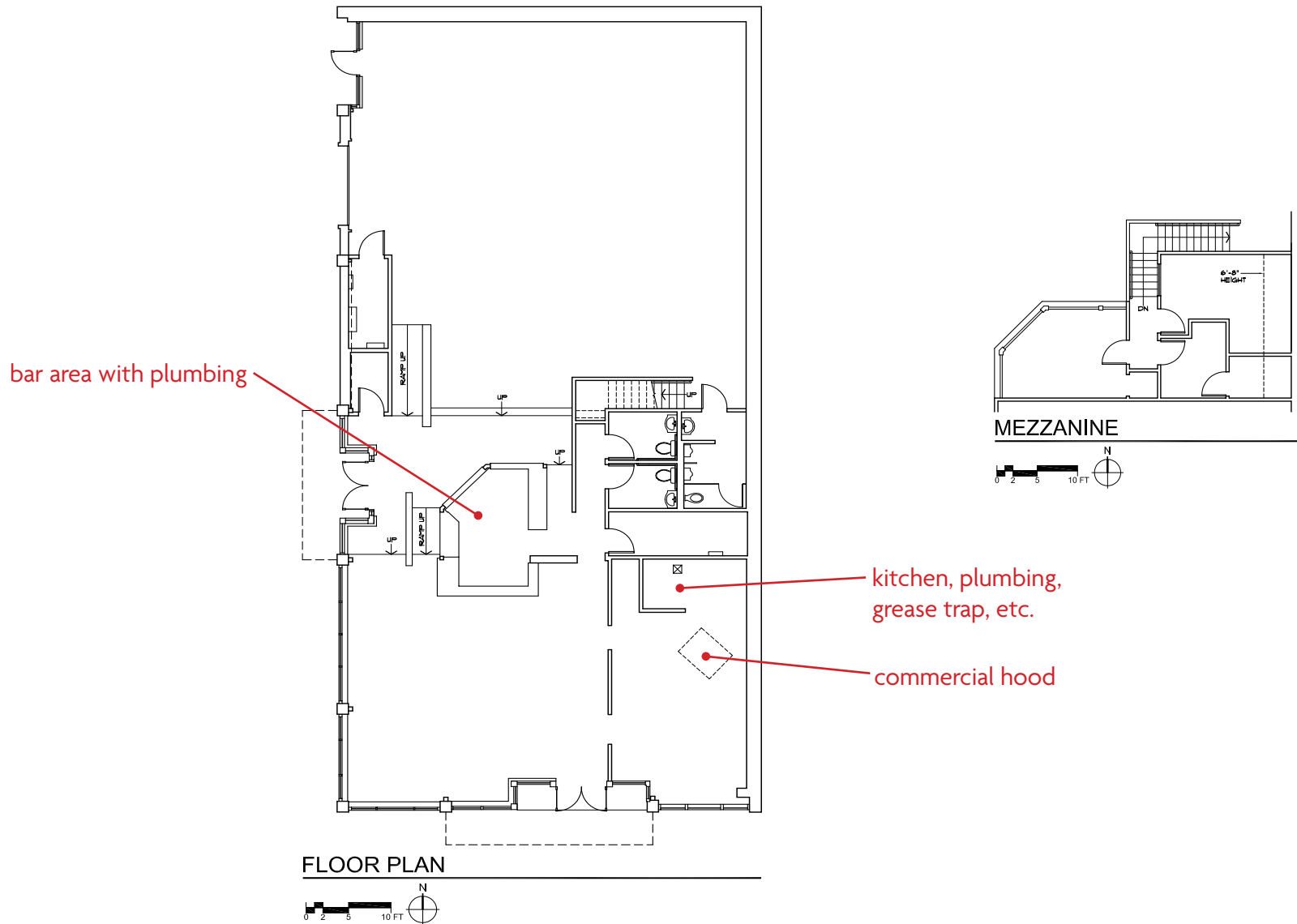


- 1 MILE – 102,416
- 3 MILE – 216,306
- 5 MILE – 308,515



- AVERAGE**
- 1 MILE – \$101,365
 - 3 MILE – \$137,038
 - 5 MILE – \$146,605

SPACE PLANS



NW 10TH AND DAVIS BUILDING
935 NW DAVIS - PORTLAND, OREGON
#24019 03/20/24

BROCK SWITZER
503-245-1400 x518
BROCK@HSMPCIFIC.COM

MELISSA MARTIN
503-245-1400 x525
MELISSA@HSMPCIFIC.COM

A MEMBER OF
CHAINLINKS
RETAIL ADVISORS

HSM
PACIFIC
retail solutions

4260 GALEWOOD ST. SUITE B LAKE OSWEGO, OR 97035