

5306 N LOMBARD

Portland • OR



PROPERTY HIGHLIGHTS

- High Visibility Retail Corner
- Gateway to University of Portland with 3,565 Students
- Asking rent \$28.00 SF/NNN

JOIN THESE TENANTS:



Flying Pie Pizzeria



DEMOGRAPHICS

	1 MILE	3 MILE	5 MILE
2022 POPULATION	21,340	69,972	222,738
2022 AVG. HH INCOME	\$76,483	\$95,655	\$115,281
2022 DAYTIME POPULATION	3,811	44,446	215,486

CONTACT:

DOUG MAGNUSEN doug@hsmpacific.com

503.245.1400

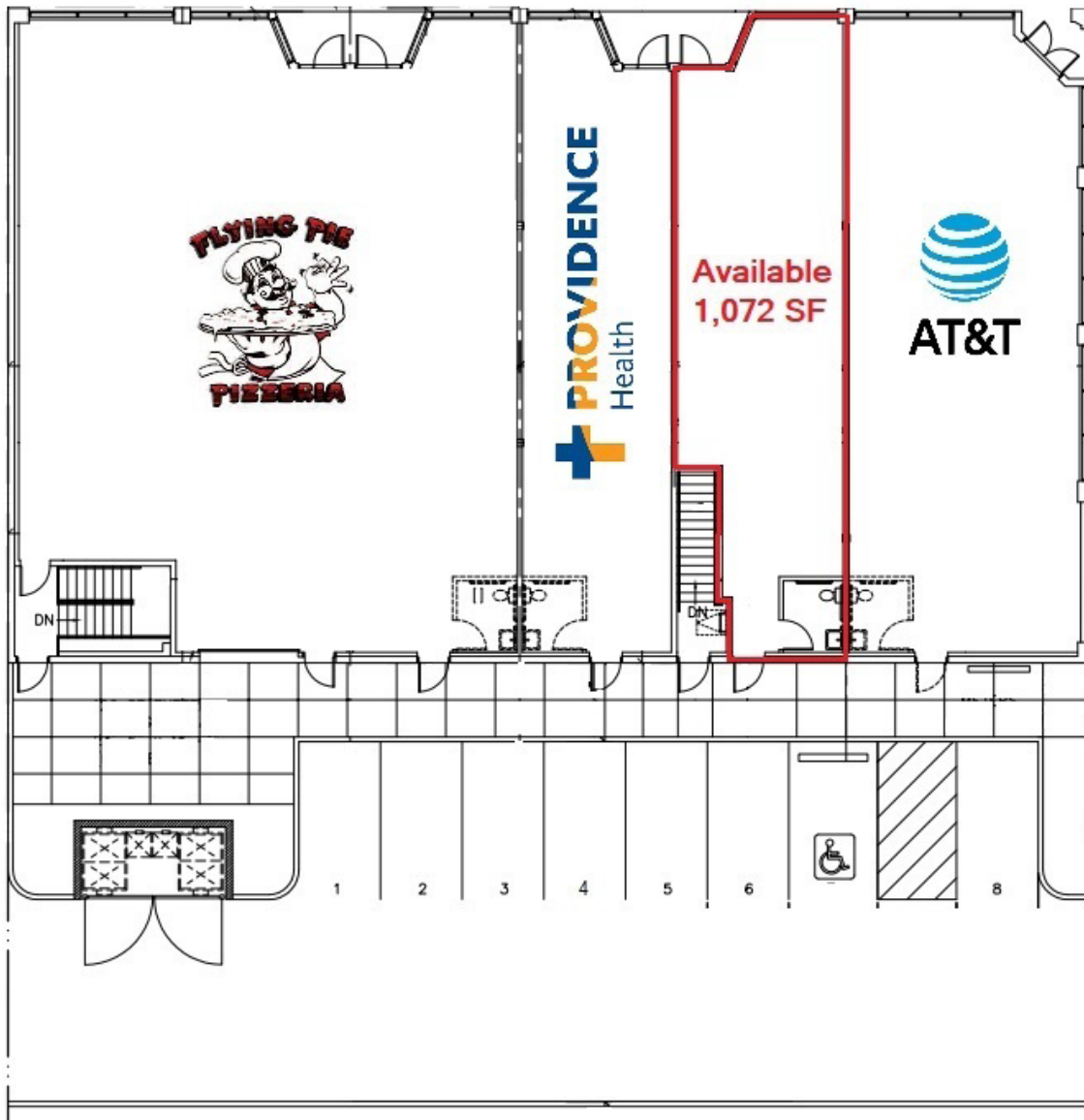
CHAIN.LINKS
RETAIL ADVISORS

5306 N LOMBARD

Portland • OR



N LOMBARD ST
(15,796 ADT)



N PORTSMOUTH AVE

3,565 Students
(.5 Mile)



CONTACT:

DOUG MAGNUSEN doug@hsm Pacific.com

503.245.1400

CHAINLINKS
RETAIL ADVISORS

5306 N LOMBARD

Portland • OR



CONTACT:

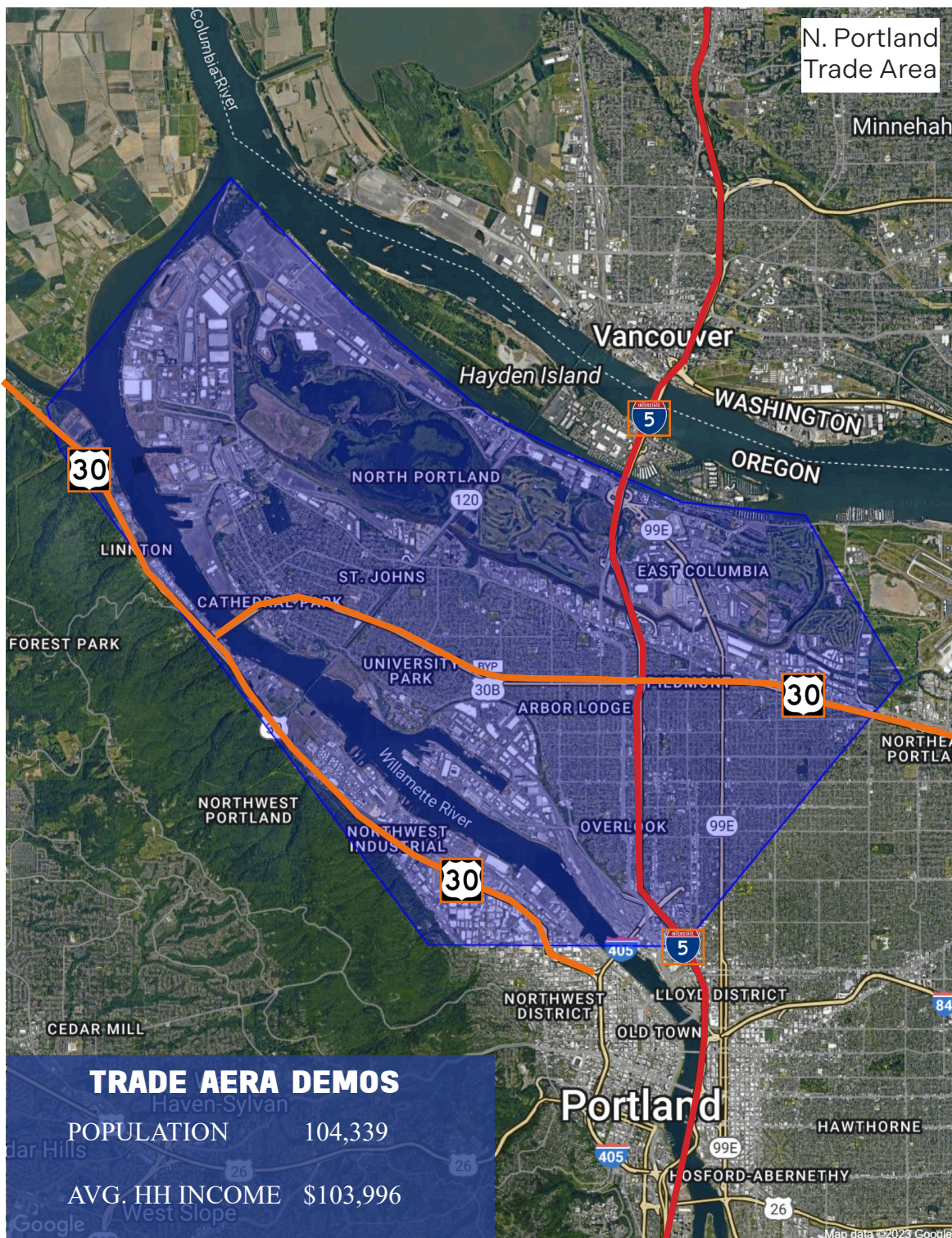
DOUG MAGNUSEN doug@hsmPacific.com

503.245.1400

CHAINLINKS
RETAIL ADVISORS

5306 N LOMBARD

Portland • OR



CONTACT:

DOUG MAGNUSEN doug@hsmPacific.com

503.245.1400

CHAINLINKS
RETAIL ADVISORS