

ANCHOR BOX AVAILABLE AT TANASBOURNE TOWN CENTER



HWY 26 & 185TH AVE IN BEAVERTON, OR

- 36,656 SF ANCHOR BOX AVAILABLE
- LARGEST POWER CENTER IN THE TANASBOURNE TRADE AREA
- CO-TENANTS INCLUDE BEST BUY, TARGET, OLD NAVY, MICHAELS, MARSHALLS, SIERRA TRADING POST, BARNES & NOBLE, NORDSTROM RACK, PETCO AND ULTA
- VISIBILITY FROM HIGHWAY 26
- OVER 60,000 VPD ON 185TH & OVER 90,000 VPD ON HIGHWAY 26
- CALL FOR DETAILS

For more information, contact:

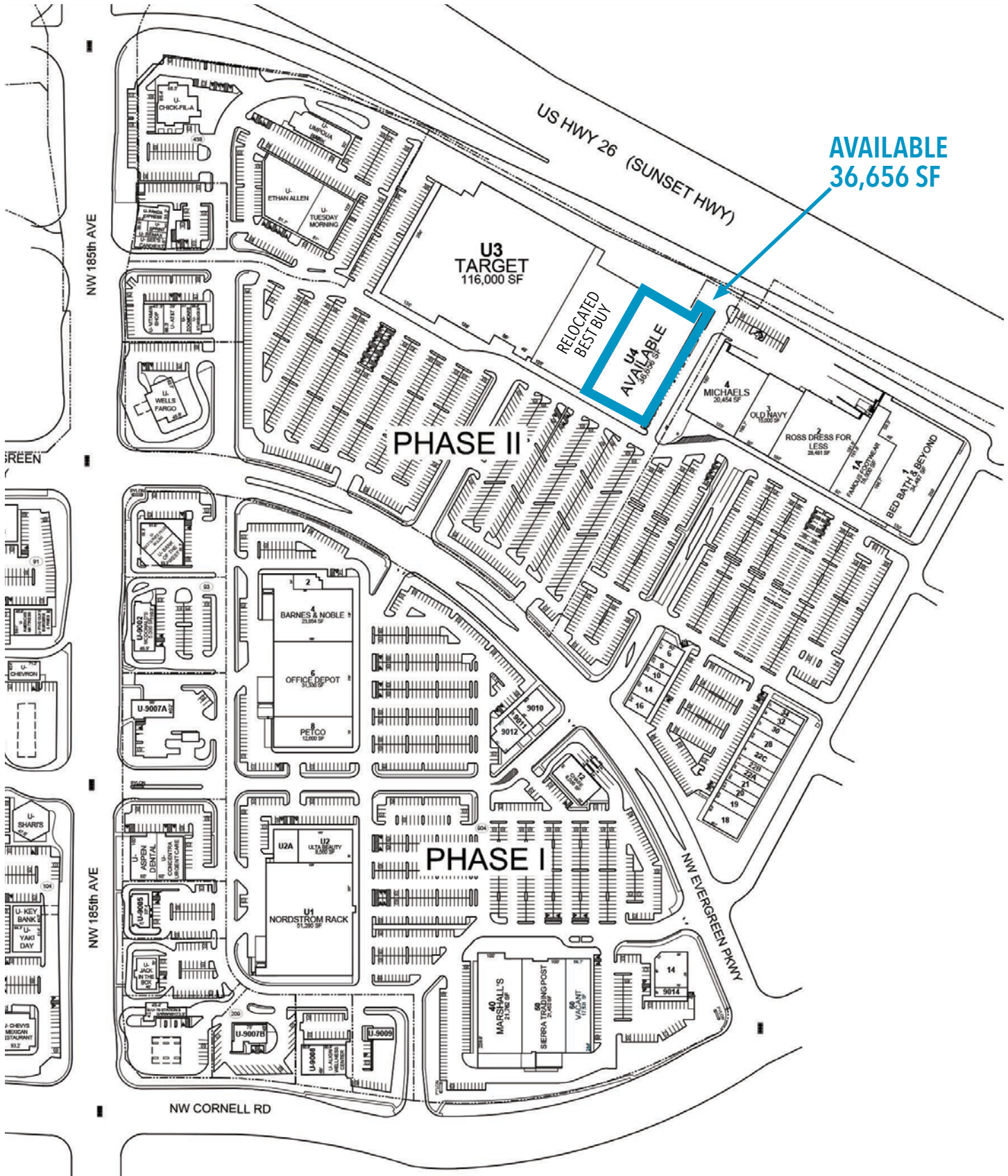
MICHAEL HEERMAN
michael@hsmacific.com

503-245-1400



0612 SW Idaho St, Suite 2, Portland, Oregon 97239
www.hsmacific.com

SITE PLAN



**AVAILABLE
36,656 SF**

**U3
TARGET
116,000 SF**

**U4
AVAILABLE
36,656 SF**

**MICHAELS
31,454 SF**

PHASE II

**BARNES & NOBLE
23,244 SF**

**OFFICE DEPOT
15,154 SF**

**PETCO
12,000 SF**

PHASE I

**NORDSTROM RACK
21,200 SF**

**MARSHALL'S
21,700 SF**

**SIERRA TRADING POST
20,600 SF**

**VACANT
10,600 SF**

NW 185th AVE

NW 185th AVE

NW CORNELL RD

US HWY 26 (SUNSET HWY)

NW EVERGREEN PKWY

OBLIQUE AERIAL & DEMOGRAPHICS



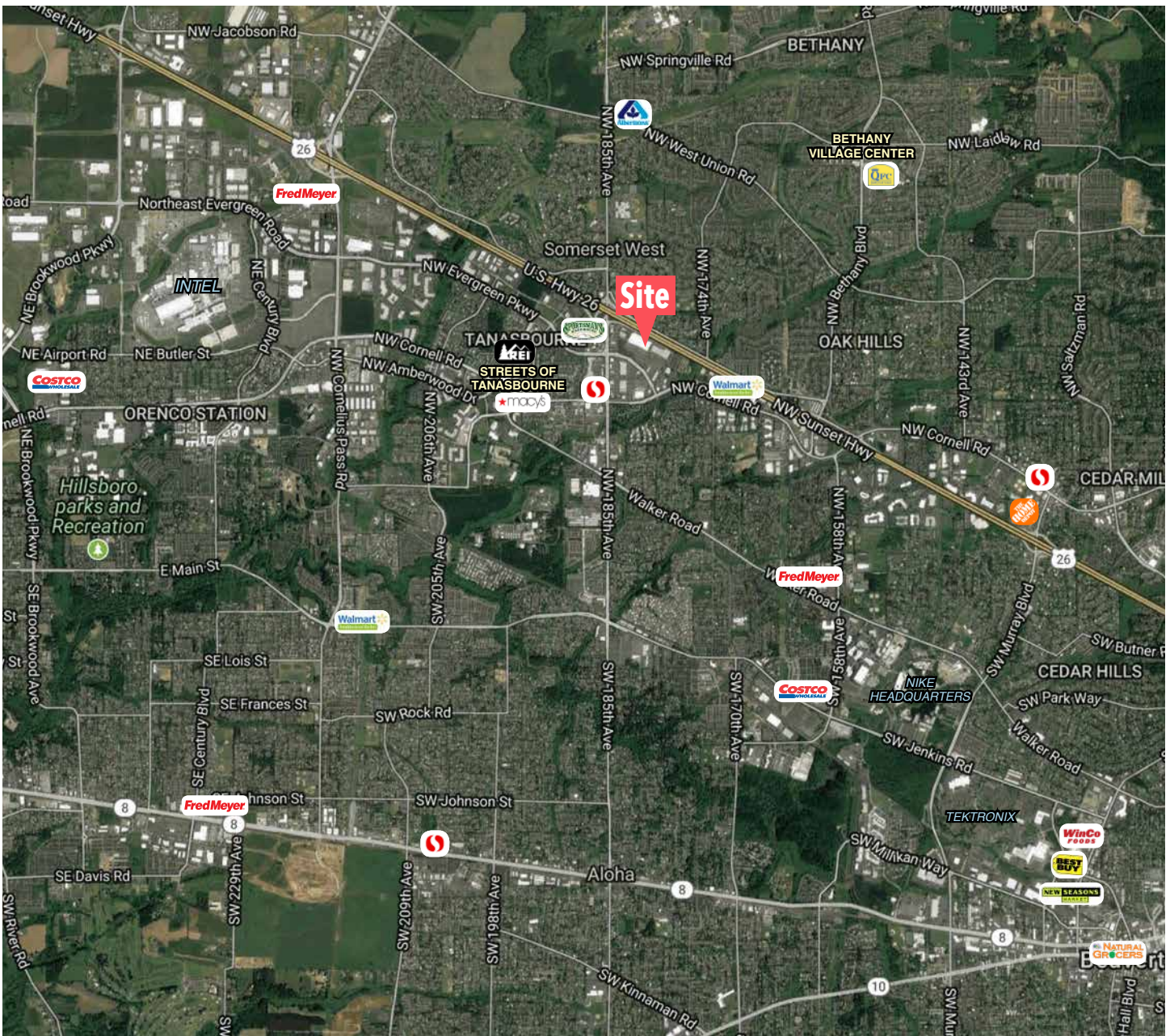
POPULATION
 1 MILE - 20,669
 3 MILE - 144,281
 5 MILE - 276,049

DAYTIME POPULATION
 1 MILE - 18,362
 3 MILE - 87,887
 5 MILE - 178,218

AVERAGE HH INCOME
 1 MILE - \$84,378
 3 MILE - \$94,149
 5 MILE - \$94,742

MEDIAN INCOME
 1 MILE - \$79,050
 3 MILE - \$86,743
 5 MILE - \$86,070

TRADE AREA AERIAL



For more information, contact:

MICHAEL HEERMAN
michael@hsmipacific.com

503-245-1400



0612 SW Idaho St, Suite 2, Portland, Oregon 97239
www.hsmipacific.com