

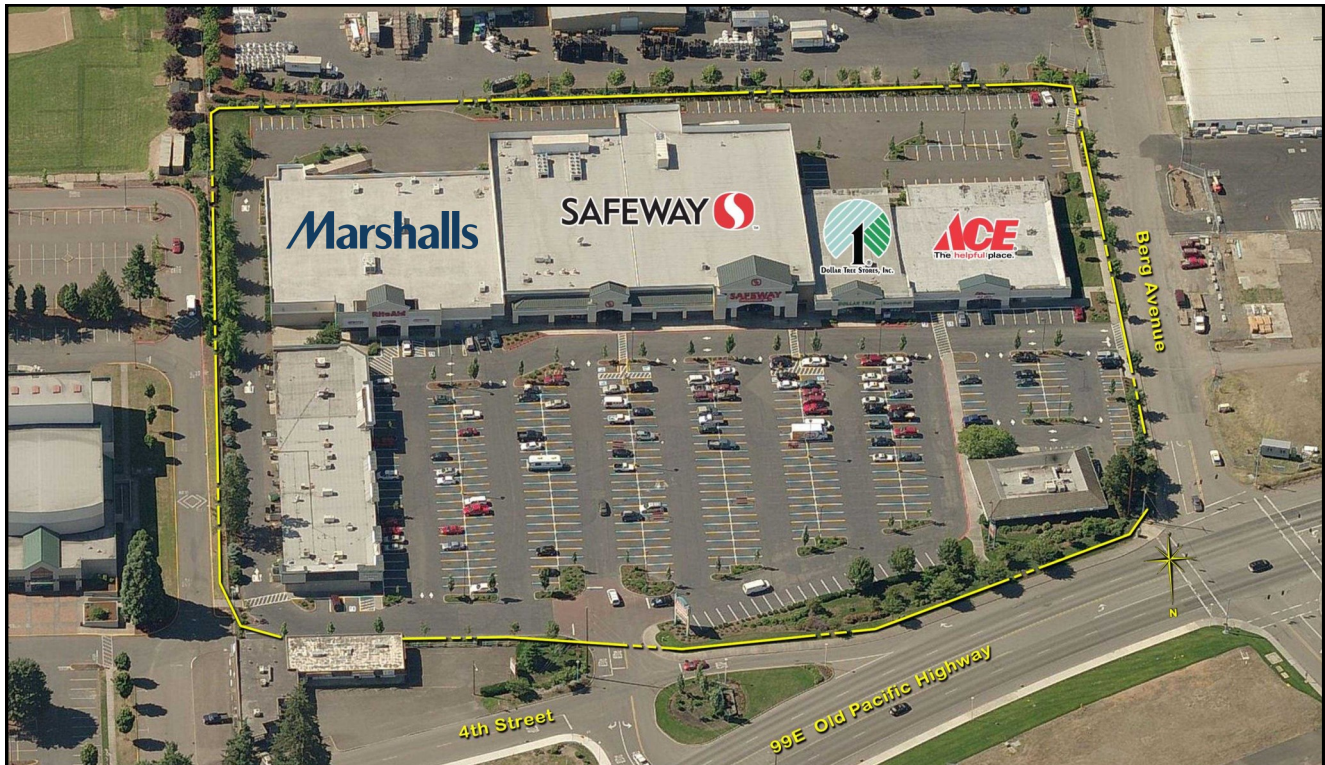
FOR LEASE: SAFEWAY ANCHORED RETAIL

Marshalls

SAFEGWAY

DOLLAR TREE

ACE
The helpful place.



- Safeway, Dollar Tree, Ace Hardware & Marshalls anchored center.
- The center draws from an extended trade that includes: Mulino, Woodburn, S. Oregon City and Molalla.
- Good visibility to Hwy 99E.
- Directly adjacent to Canby High School, which has an off-campus lunch policy.
- Call for pricing and remodel plans.



CANBY SQUARE

HWY 99E & BERG AVENUE. CANBY, OR

CONTACT

Melissa martin
503-245-1400 Ext 525 - melissa@hsmPacific.com
www.hsmPacific.com

HSM
PACIFIC
retail solutions
CHAIN LINKS
RETAIL ADVISORS

HSM Pacific Realty, Inc.
4260 Galewood St Ste B
Lake Oswego, OR 97035

SITE PLAN:



Available Space:
 1015 / 1,076 SF
 1023 / 877 SF
 1025 B / 8,197 SF

Demographics (2023 Est.)

	3 Mile	5 Mile	10 Mile
Population	22,537	43,161	243,158
Total Households	8,282	16,689	92,430
Avg. Household Income	\$123,821	\$124,009	\$146,878
Daytime Employees	8,724	16,105	105,681

Traffic Counts:

HWY 99 @ .02 Miles South of SW Elm St. 22,935 (2023 ADT)

CANBY SQUARE

HWY 99E & BERG AVENUE. CANBY, OR

CONTACT

Melissa martin
 503-245-1400 Ext 525 - melissa@hmpacific.com
 www.hmpacific.com



HSM Pacific Realty, Inc.
 4260 Galewood St Ste B
 Lake Oswego, OR 97035

AERIAL:



CANBY SQUARE

HWY 99E & BERG AVENUE. CANBY, OR

CONTACT

Melissa martin

503-245-1400 Ext 525 - melissa@hspacific.com

www.hspacific.com



HSM Pacific Realty, Inc.

4260 Galewood St Ste B

Lake Oswego, OR 97035

FOR LEASE: SAFEWAY ANCHORED RETAIL



CANBY SQUARE

HWY 99E & BERG AVENUE. CANBY, OR

CONTACT

Melissa martin
503-245-1400 Ext 525 - melissa@hsmacific.com
www.hsmacific.com



HSM Pacific Realty, Inc.
4260 Galewood St Ste B
Lake Oswego, OR 97035