

# PORTLAND CBD

939 SW MORRISON ST., PORTLAND, OR



34,300 SF of Anchor Space For Lease

- Located in Downtown Portland's retail core.
- Surrounded by over 4,000 hotel rooms including the recently opened Ritz-Carlton adjacent to the site.
- Site adjacent to SmartPark with ample hourly, daily and monthly parking including 795 parking stalls.
- Easy public transportation access just steps away.

## DEMOGRAPHICS



1 MILE - 48,910  
3 MILE - 183,068  
5 MILE - 428,950



1 MILE - \$101,423  
3 MILE - \$137,141  
5 MILE - \$148,082



1 MILE - 102,236  
3 MILE - 215,240  
5 MILE - 309,509

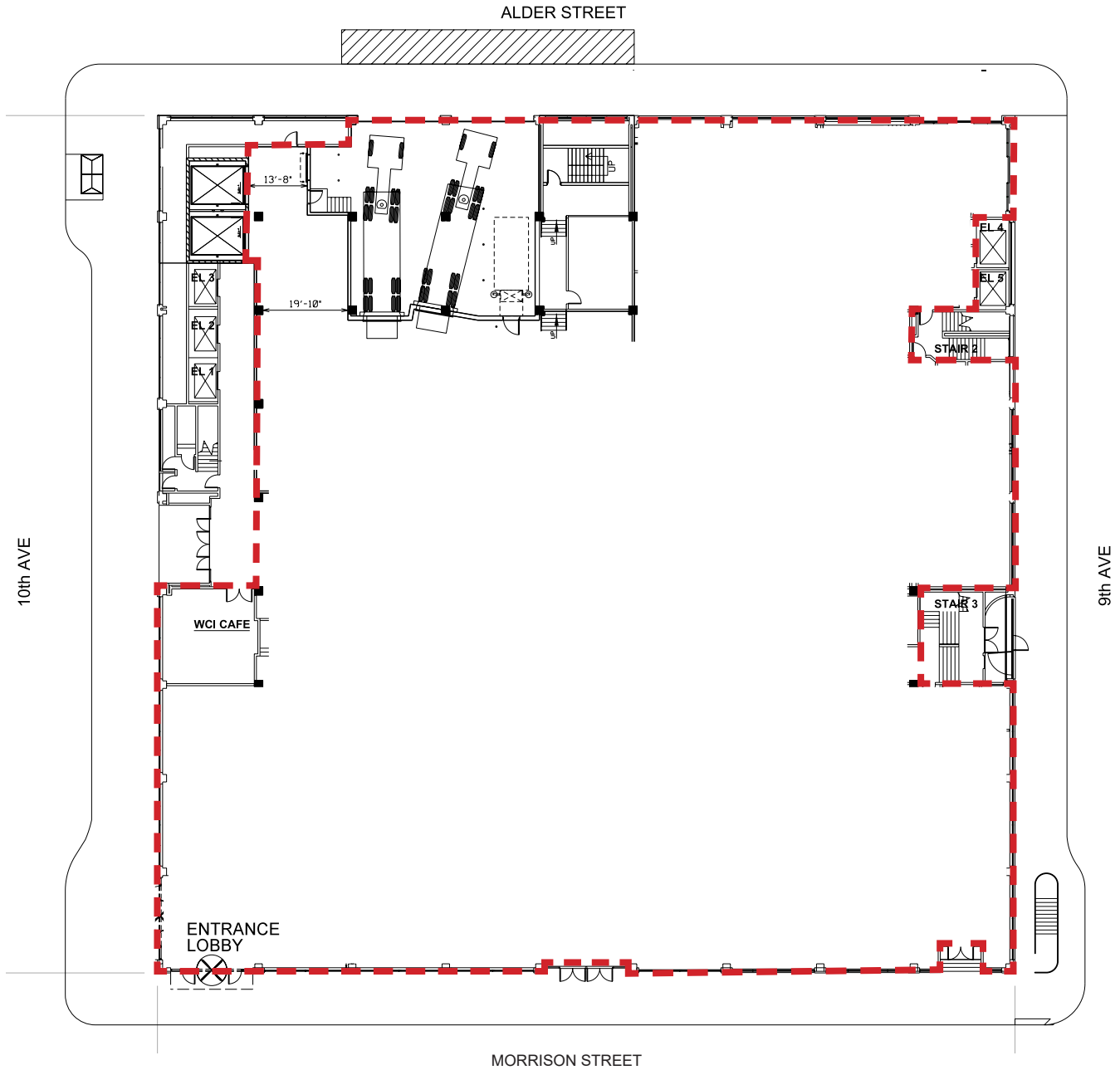
FOR LEASING INFORMATION CONTACT:

**Michael S. Heerman**  
michael@hsmPacific.com

**Brock Switzer**  
brock@hsmPacific.com



# Space Plan



 PREMISE

FOR LEASING INFORMATION CONTACT:

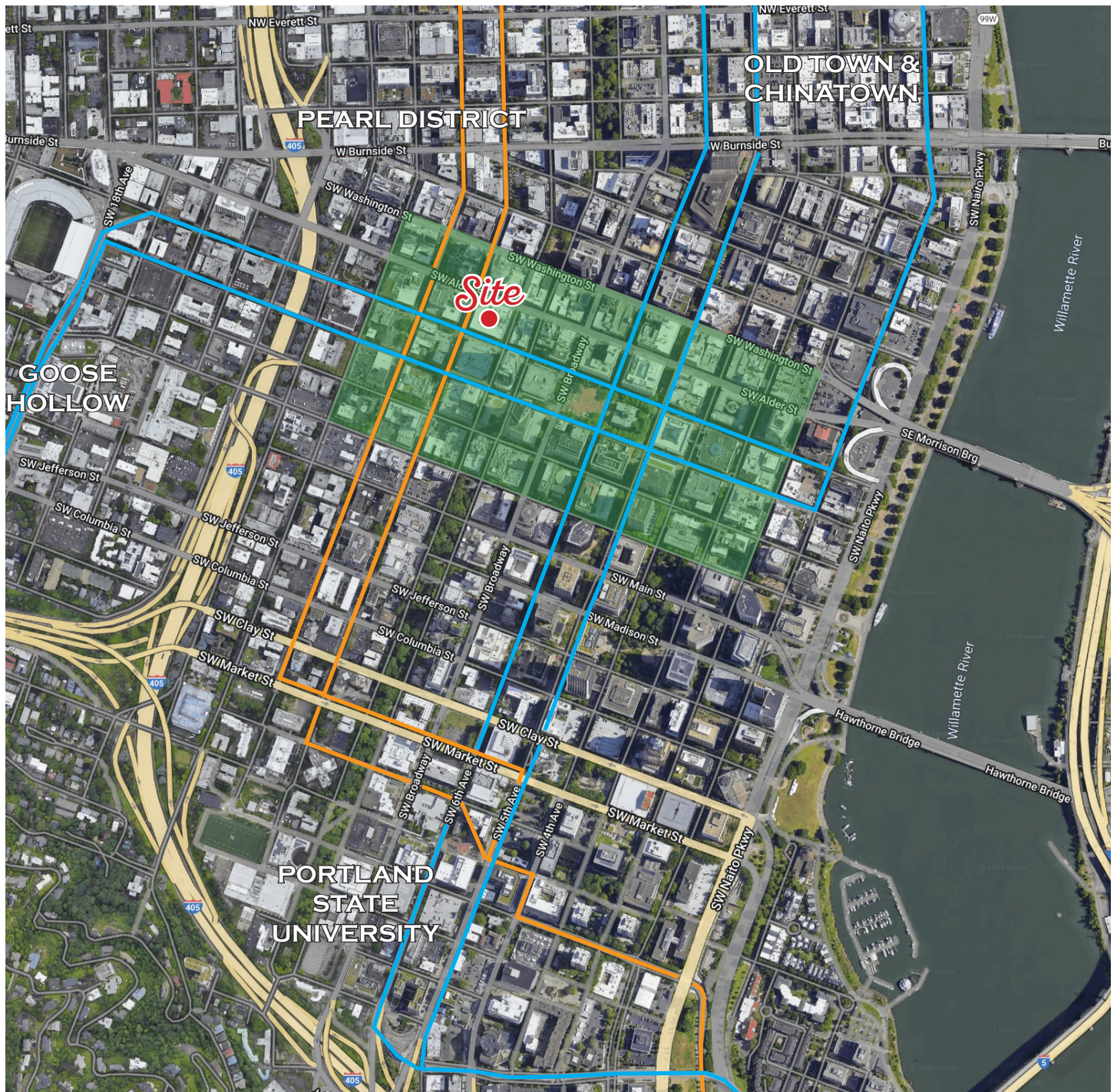
**Michael S. Heerman**  
michael@hsm Pacific.com

**Brock Switzer**  
brock@hsm Pacific.com





# Aerial



 CBD Retail Core Area

FOR LEASING INFORMATION CONTACT:

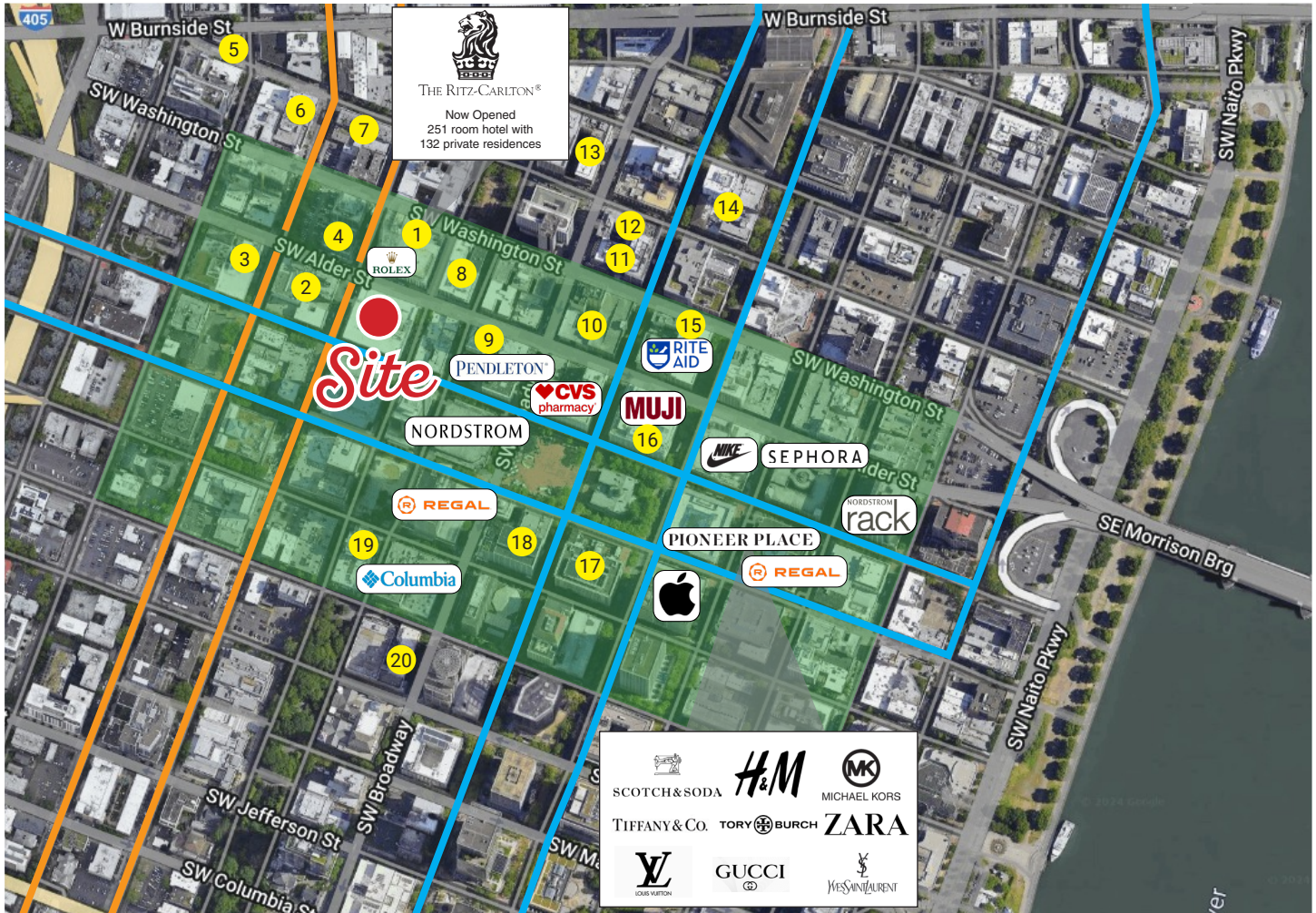
**Michael S. Heerman**  
michael@hspacific.com

**Brock Switzer**  
brock@hspacific.com





# Retail Aerial & Surrounding Hotels



● Hotels

■ CBD Retail Core Area

— Portland Streetcar

— Portland MAX Line

1. Ritz-Carlton (251 rooms)
2. Sentinel Hotel (100 rooms)
3. Hyatt Centric Hotel (220 rooms)
4. The Moxy Hotel (197 rooms)
5. McMenemy's Crystal Hotel (51 rooms)
6. Mark Spencer Hotel (150 rooms)
7. Ace Hotel Portland (78 rooms)
8. Woodland Hotel (150 rooms)
9. Dossier Hotel (205 rooms)
10. Bidwell Marriot Hotel (258 rooms)
11. Kimpton Hotel Vintage (117 rooms)
12. Hotel Lucia (127 rooms)
13. The Benson Hotel (287 rooms)
14. Courtyard by Marriott (253 rooms)
15. Royal Sonesta (221 rooms)
16. The Nines Hotel (331 rooms)
17. The Duniway Portland (327 rooms)
18. Hilton Portland Downtown (455 rooms)
19. The Paramount Hotel (154 rooms)
20. The Heathman Hotel (150 rooms)

FOR LEASING INFORMATION CONTACT:

**Michael S. Heerman**  
michael@hspacific.com

**Brock Switzer**  
brock@hspacific.com

