

PAD OPPORTUNITY AT HALL BLVD & SCHOLLS



Pad opportunity available at 8860 SW Hall Blvd in Tigard, Oregon. Building size can range from 1,800 SF to 2,400 SF. Drive thru option is available. Please call for rates.

TRAFFIC COUNTS
 HALL BLVD—30,713 ADT
 SCHOLLS FERRY – 17,062 ADT
 HWY 217 – 109,348 ADT

FOR MORE INFORMATION, CONTACT:

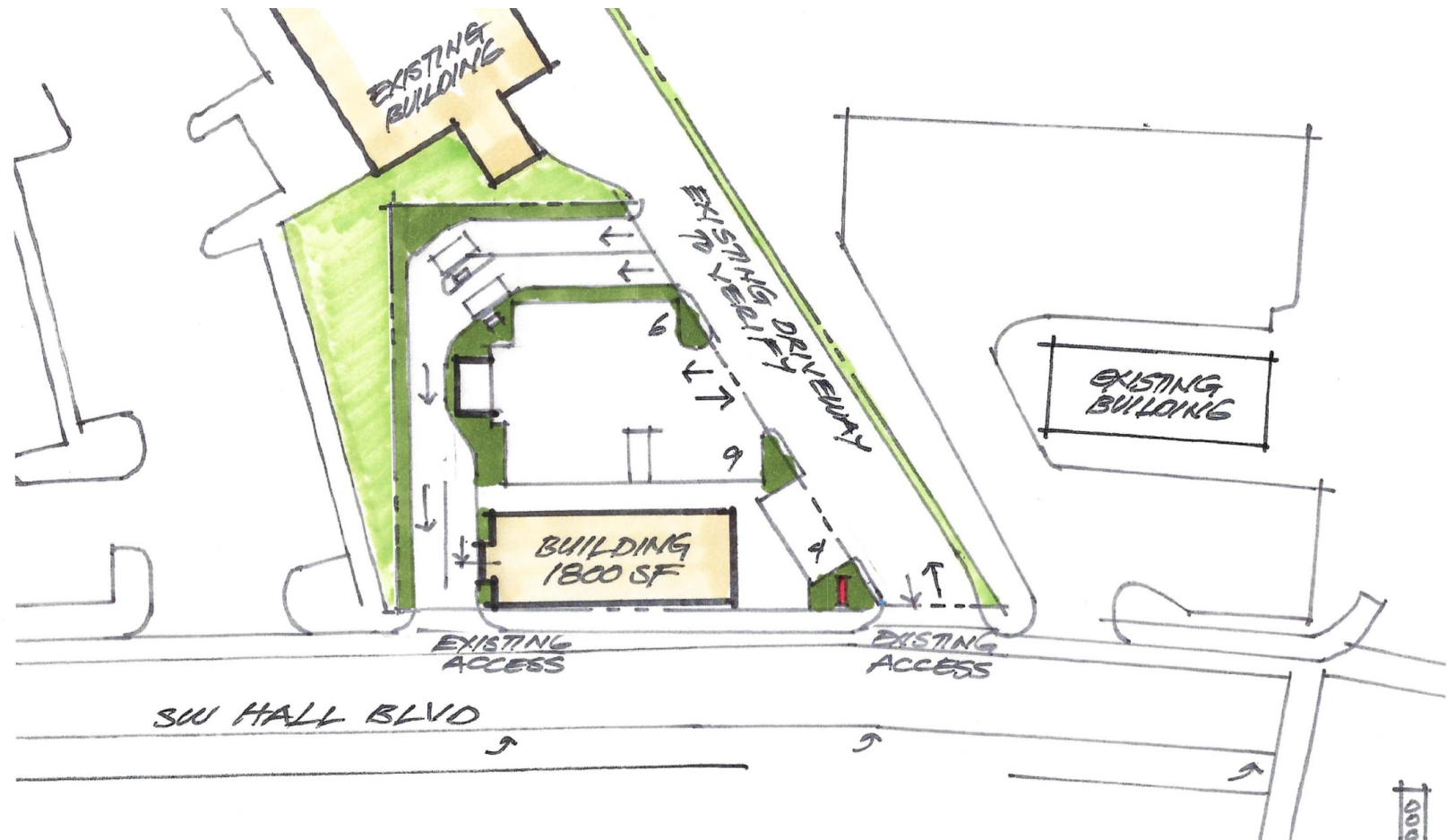
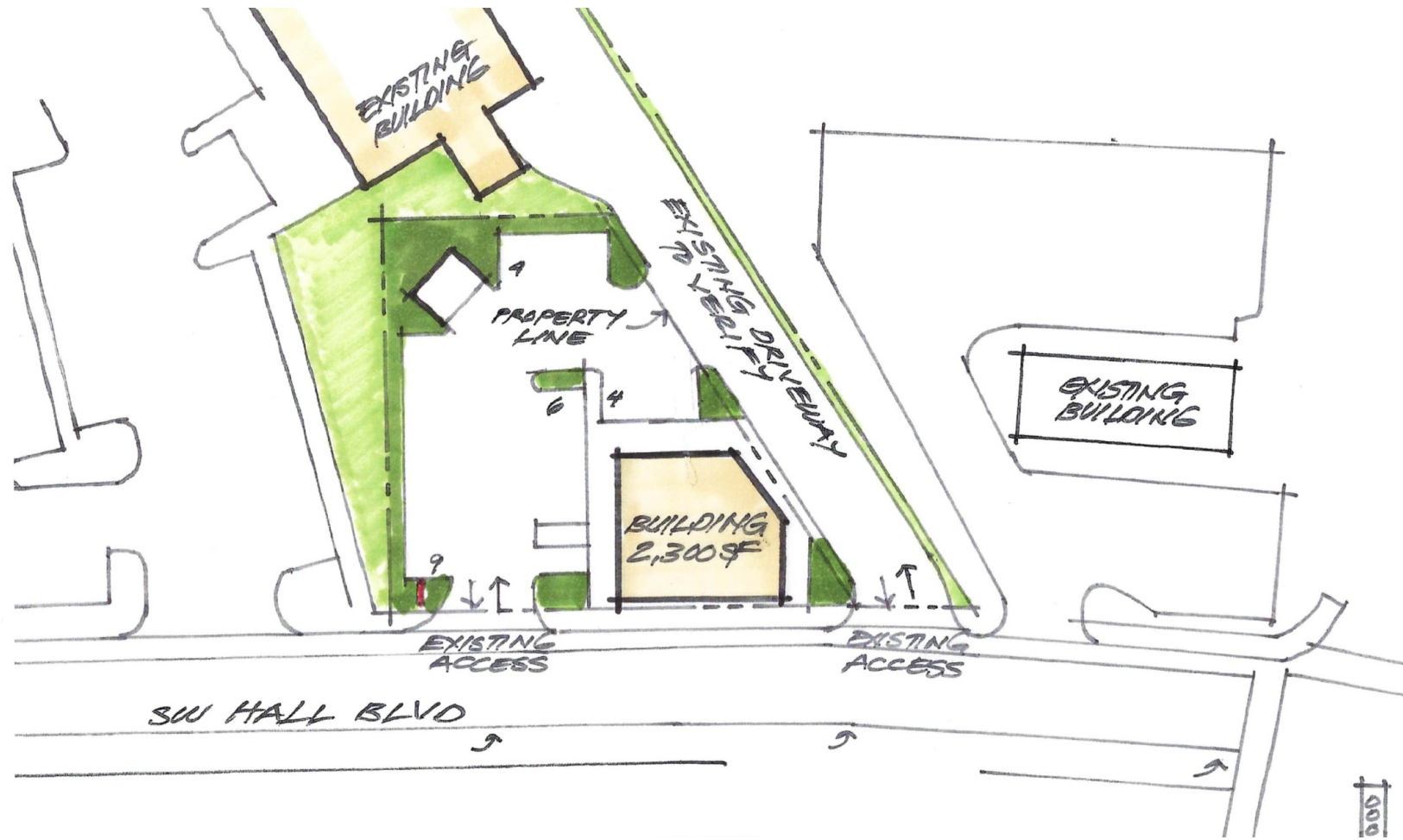
MELISSA MARTIN
 melissa@hsmacific.com

503-245-1400



4260 Galewood St, Suite B
 Lake Oswego, OR 97035
 www.hsmacific.com

POSSIBLE PAD CONFIGURATIONS



DEMOGRAPHICS



8860 SW Hall Blvd Portland, OR 97223	1 mi radius	3 mi radius	5 mi radius
Population			
2021 Estimated Population	10,615	143,815	341,494
2026 Projected Population	10,959	147,185	351,615
2020 Census Population	10,736	142,976	338,331
2010 Census Population	10,004	134,448	309,692
Projected Annual Growth 2021 to 2026	0.6%	0.5%	0.6%
Historical Annual Growth 2010 to 2021	0.6%	0.6%	0.9%
2021 Median Age	40.2	39.1	39.8
Households			
2021 Estimated Households	4,435	59,365	140,235
2026 Projected Households	4,603	61,436	146,324
2020 Census Households	4,507	58,956	138,932
2010 Census Households	4,216	55,805	128,167
Projected Annual Growth 2021 to 2026	0.8%	0.7%	0.9%
Historical Annual Growth 2010 to 2021	0.5%	0.6%	0.9%
Race and Ethnicity			
2021 Estimated White	70.0%	67.9%	69.8%
2021 Estimated Black or African American	3.0%	2.7%	2.4%
2021 Estimated Asian or Pacific Islander	5.8%	8.7%	9.6%
2021 Estimated American Indian or Native Alaskan	1.2%	1.0%	0.8%
2021 Estimated Other Races	19.9%	19.8%	17.4%
2021 Estimated Hispanic	17.5%	17.0%	14.2%
Income			
2021 Estimated Average Household Income	\$82,515	\$107,727	\$121,768
2021 Estimated Median Household Income	\$73,455	\$85,080	\$96,106
2021 Estimated Per Capita Income	\$34,653	\$44,569	\$50,093
Education (Age 25+)			
2021 Estimated Elementary (Grade Level 0 to 8)	3.8%	3.6%	2.9%
2021 Estimated Some High School (Grade Level 9 to 11)	5.1%	3.6%	2.9%
2021 Estimated High School Graduate	20.7%	16.4%	14.7%
2021 Estimated Some College	21.6%	21.2%	19.6%
2021 Estimated Associates Degree Only	8.7%	8.1%	8.0%
2021 Estimated Bachelors Degree Only	26.8%	30.3%	31.3%
2021 Estimated Graduate Degree	13.3%	16.8%	20.7%
Business			
2021 Estimated Total Businesses	1,883	9,383	19,883
2021 Estimated Total Employees	20,949	79,183	158,946
2021 Estimated Employee Population per Business	11.1	8.4	8.0
2021 Estimated Residential Population per Business	5.6	15.3	17.2