

PRIME RETAIL SITE IN MEDFORD, OR

1182 Court St. Medford, OR



- 1.51 Acres
- “Main and Main” location on hard corner of main arterials
- Ground lease or BTS opportunity in high traffic retail corridor
- Easy access to I-5
- Top trade area in Medford
- Close proximity to Northgate Marketplace and Rogue Valley Mall
- Approx. 400-unit luxury apartment complex under construction directly across the street
- Large daytime population

Contact:

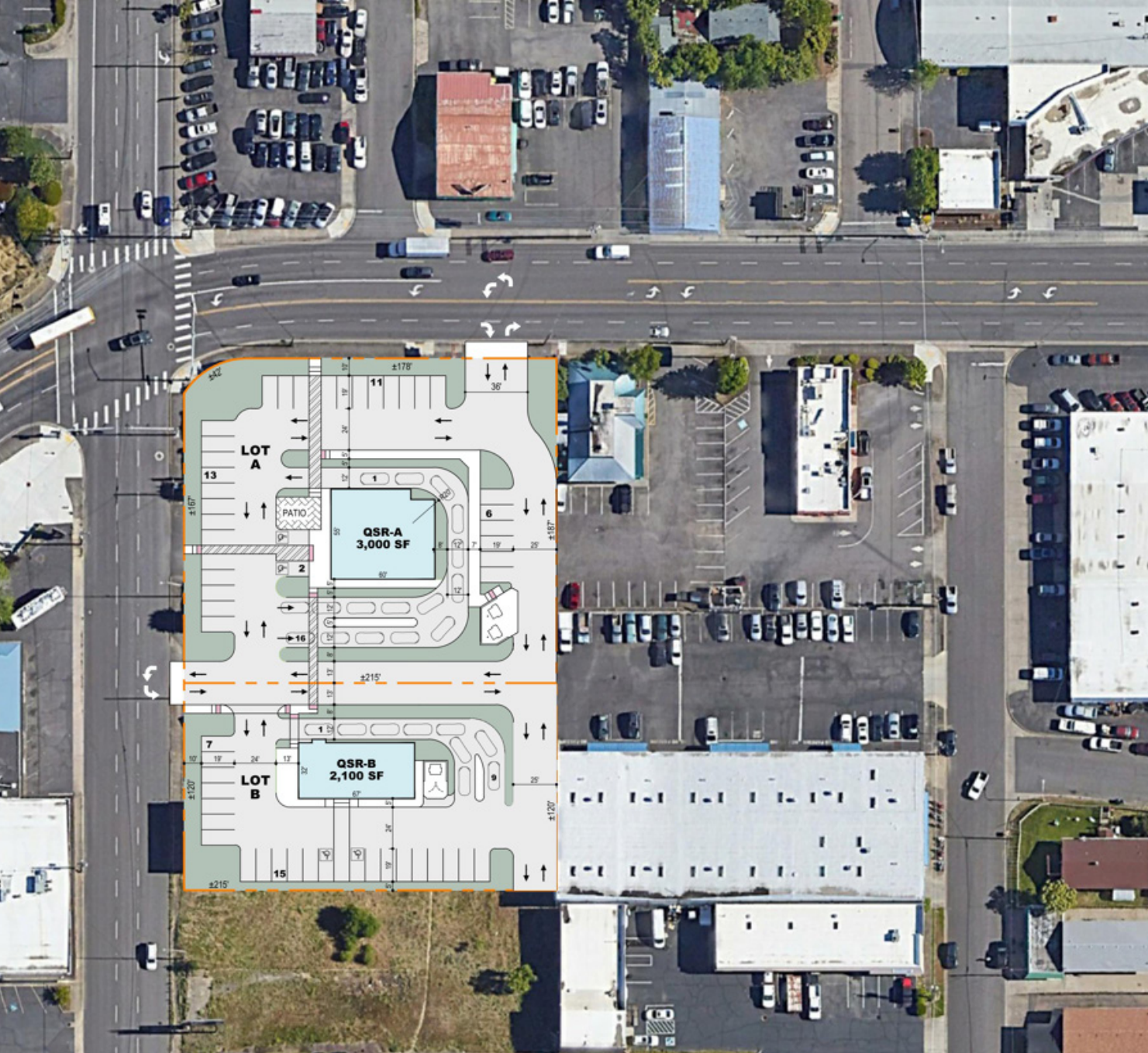
Brock Switzer:
503-245-1400
brock@hsmpacific.com



A MEMBER OF
CHAINLINKS
RETAIL ADVISORS

4260 Galewood St. Suite B, Lake Oswego, OR 97035

POTENTIAL SITE PLAN



Contact:

Brock Switzer:
503-245-1400
brock@hspacific.com



4260 Galewood St. Suite B, Lake Oswego, OR 97035



DEMOGRAPHICS



- 1 MILE – 11,648
- 3 MILE – 83,229
- 5 MILE – 122,387



- 1 MILE – 12,638
- 3 MILE – 41,420
- 5 MILE – 54,272



- 1 MILE – \$52,084
- 3 MILE – \$69,820
- 5 MILE – \$79,249